



LC32

Covert Scouting Camera Instruction Manual



Table of Contents

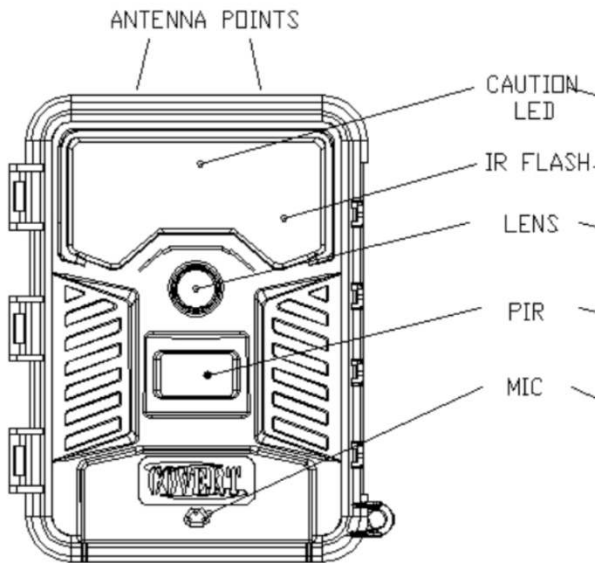
Camera Button Info Diagram	4
Installing the Batteries.....	6
Installing the SD Card.....	6
Select and Attach to a Base Unit.....	8
Locating Linked Cameras.....	11
2.4G Test Mode.....	12
Customizing the Camera Settings:	17
PIR tab:	19
SYS tab:.....	22
Viewing photos on the Color Display:	26
Tricks and Tips on Field Setup:.....	27
Troubleshooting:.....	27
Warranty:	29
Warranty Policy and Procedure:	32

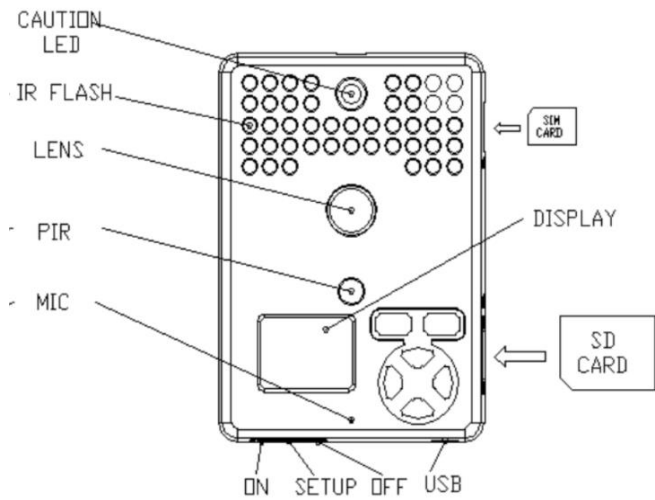
What You Will Need To Setup the Camera:

- Minimum of 4 AA Batteries
- (1) 8GB SD Card (Up to 32GB)

Congratulations on your purchase of the LC32 Covert Scouting Camera! We truly value your business and will continue to provide you top quality customer service should you ever need help with any of our products. Check out our other products on our website at:
www.covertscoutingcameras.com

Camera Button Info Diagram:





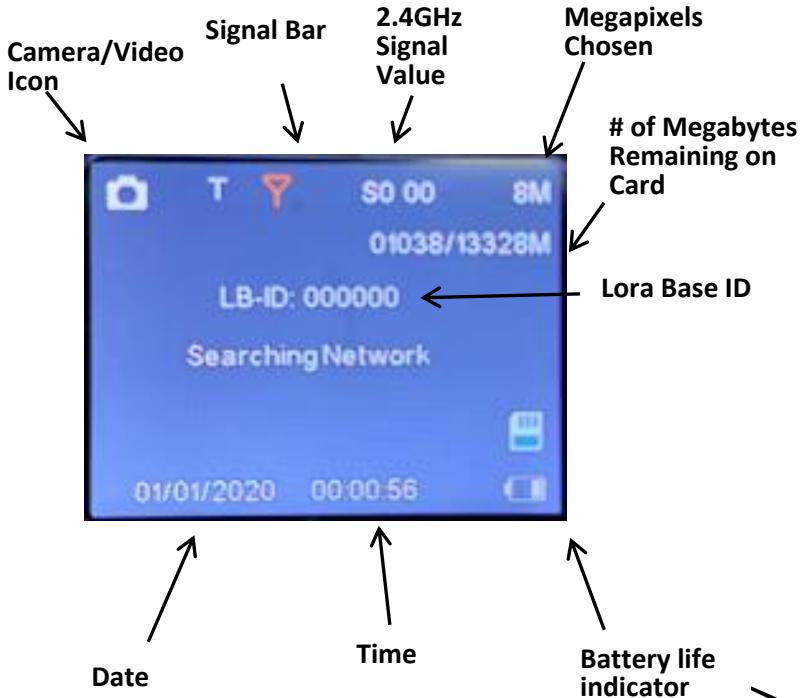
Installing the Batteries:

The LC32 can function short term on 4AA batteries. We suggest you use 12AA batteries to maximize camera performance and battery life. Using Covert 2300mAh, NiMH rechargeable AA batteries can extend the battery life significantly when using a solar panel or other external power source.

Installing the SD card:

To be able to power up the camera you will need to install an SD card in the slot in the side of the camera. Push into the card slot until it clicks and release. To remove, repeat that process, the card will pop out enough to remove. You can use any SD card size up to 32GB. We recommend using any type of SDHC (not ultra or high performance). You must have the SD card in the camera to be able to turn the camera on and set it up.

Understanding Main Screen Info:



Select and Attach to a Base Unit

(LB-A/V)

Below is the base unit menu.

4G Signal

Base Unit ID

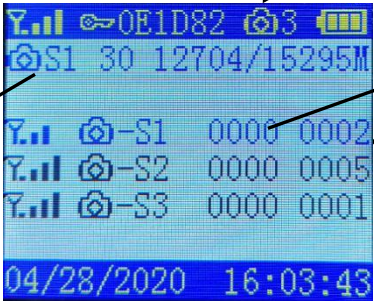
Total Number of Linked Cameras

Battery Life Indicator

New Round of Photos Received from S1

Total Number of Photos Received from S1

S1 is the connected camera in which the base unit is currently communicating. The higher the number beside it reads, the better the connectivity.

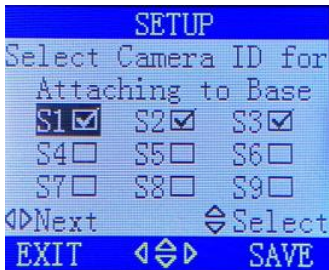


Camera ID	Signal Strength	Base Unit ID	Current Round	Total Photos
S1	4G	0E1D82	30	12704/15295M
-S1	4G		0000	0002
-S2	4G		0000	0005
-S3	4G		0000	0001

04/28/2020 16:03:43

Select and Link to a Base Unit:

First, turn the base unit on to setup. Press **M** to go into the menu. Select **Choose Linked IDs**. Select the IDs you want to use.



For example, if you have 3 linked cameras to attach, then you can choose any 3 IDs out of S1-S9.)

Second, turn on the LC32 (linked camera) to the setup mode. Choose the net tab to set the Base ID. See photo for reference:

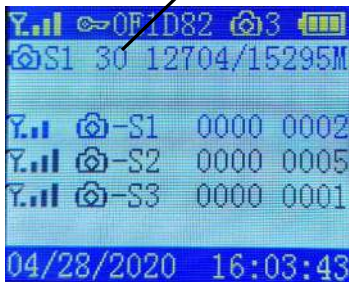


Then, type the base unique ID showing on your LB-A main screen and select LoRa linked camera ID here. For example, if you set it as S1, you will see S1 on your LB-A main screen after it is successfully linked.

Locating Linked Cameras

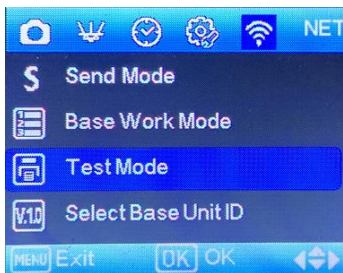
To get a stable 2.4GHz signal, we suggest you set the linked camera at place where it registers at least a 10 on the GHz signal strength. We recommend placing the base unit at the highest elevation point.

2.4GHz Signal Strength



After you link the connected camera (LC32) to the base unit, please do a test photo. See next page for instructions.

2.4GHz Test mode

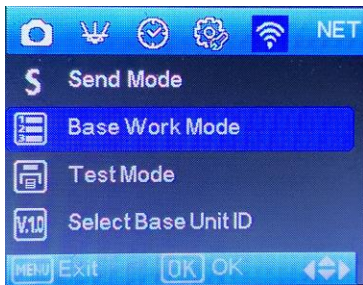


It is important for you to upload a photo to base unit via Lora 2.4G when you finish locating linked cam. To do that SD card must already have photos or you can manually take a photo by press right button when camera on its interface.

Send Mode

Send mode has two options, instant and off, it is more like a 2.4G switch. If you choose off, the 2.4G module will switch off.

Base Work Mode



Upload Delay Settings: Default setting is 30 mins. The base unit will wake up and communicate with LC32 cameras every 30 minutes. If there are 3 linked cameras (S1, S2, S3) connected, the base unit will wake up and check on S1. If there are new

photos, it will receive and upload those photos. And 30 minutes later, it will wake up to communicate with S2. This is the power saving technique designed to optimize your battery life. If you set the camera to Real Time, the base unit will work instantly and whenever there are photos from the linked cameras, it will upload to the portal & app immediately. **We suggest to only use real time if you are using some type of auxiliary battery backup on the base unit.**

Max Number of Images Per Day This is the total number of photos per day for every linked camera connected to the base unit.

For example, if you set the max number of photos as 30, every linked camera attached to the base will upload a maximum of 30 photos to the base unit and then to app & web-portal per day. You can choose from 5-50. If you want an unlimited number of photos, then turn it **OFF**. We suggest unlimited

only when your base unit is using auxiliary power.
(Solar panel with rechargeable batteries and a 6V,
etc.)

Accessing the Quick Menu Setup:

Your camera is set to function with the default settings without any further customization. However, you will likely want to set the time and date. The following information will help you customize your camera settings so you can get the most out of the trail camera experience.

We have also included a **Quick Menu** for easy programming. Press the ◀ button to access the **Quick Menu**.



Quick Menu:

2 Photos – 30 Second Interval

3 Photos – 1 Minute Interval

5 Photos – 3 Minute Interval

1 Photo + 10 Second Video – 1 Minute Interval

15 Second Video – 1 Minute Interval

Select your preferred settings and press **OK** to save. Press the ◀ button to close out of the **Quick Menu**.

Customizing the Camera Settings: (Cam)

Press the **MENU** button once to open the customization menus. You will see **Camera Mode** and **Customize** tabs on the screen. Press the ▼ button one time. **Camera Mode** should be highlighted in blue. Press **OK**.



Under the Camera Mode tab, select whether you want Photo, Video or Picture+Video. Press **OK** to save. Press **MENU** to go back to the Camera Mode and **Customize** screen. Press the ▼ button one time until **Customize** is highlighted in blue. Press **OK**. If you chose Photo or Picture+Video Video Size

and Video Length will show up. Under the **Customize** menu, press the ► button to change the photo size. You may choose between:

3MP, 5MP, 8MP, 10MP, 12MP, up to 32MP

Press **OK** to save. Press the ▼ button one time until **Flash Range** is highlighted. You can choose between **Low**, **Medium**, and **High**.

Press the ▼ button one time until **Photo Burst** is highlighted. Photo Burst means your camera can take a 1, 2, 3, 4, 5, 6, 7, 8, 9 or 10 shot burst every time the PIR is triggered to take a photo.

If you chose Video or Picture+Video or Video, press the ▼ button to highlight **Video Size**. Press **OK**. You may choose between: 1080P HD, 720P, and WVGA. Press **OK** to save.

PIR and Time Lapse Options: (PIR)



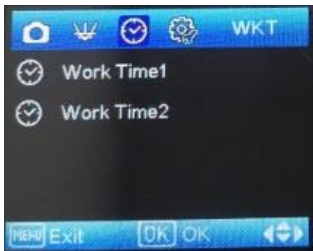
Press the ▼ button to highlight the **Trigger Mode** option in blue. Under this setting you can choose **PIR Trigger** (Where the camera is triggered by heat or motion only), **Time Lapse** (Where you tell your camera to take pictures every 5 seconds up to 24 hours) or **Both**. Highlight your selection and press **OK**. Press the **Menu** button to go back to the previous screen.

PIR Sensitivity where you can choose low, normal, or high settings. **PIR Interval** is the next customizable setting. This is the amount of delay between each picture. For example, if you have the PIR Interval set to 10 seconds, the camera will wait

10 seconds before it allows itself to be triggered again by heat or motion. Press **OK** to save.

If you chose **PIR + Time Lapse**, the camera will take photos by heat and motion as well as time lapse.

Work-Time Menu: (WKT)



If you only want your camera to be on during part of the day each day you can set the **Work Time** function(s). Press the ▼ button to highlight the **Work Time 1** option. The default setting is **OFF**. Press the ▲ button to toggle the setting to **ON** and press **OK**.



System Menu: (SYS)

The SYS tab controls all the internal system information such as Setting the clock, Time stamp, Flash range, Password, Overwrite, and Format.



SETTING THE CLOCK: Press the ▼ button one time to highlight the **Set Clock** option. Press **OK**. You will see the following screen.

Press the ▼ button to choose how you want your date displayed on the pictures. Press the ► to navigate to the Month, Day, and Year. Use the ▲ and ▼ buttons to make your selections. Press the ► to navigate to the Time, Date and Seconds. (Military Time Only). Press **OK** to save your settings.



PASSWORD: The default setting is **OFF**. Press the ▼ button to highlight the **Password** option in blue. Press **OK**. Scroll ▲ (up) to **ON** and press **OK**. Use the ▲ and ▼ buttons to choose your password and press **OK** to save your personalized password.

Make sure you write down your password or store it in your phone, so you don't lose it. If you set this option to **ON**, you will not be able to access your

camera without the password. This is a very important security feature. If you forget your password, please email us at support@dlccovert.com or call us at 877-462-1799 to request RA #.

RENAME: The default setting is **OFF**. Press the ▼ button to highlight the **Rename** option in blue. Press **OK**. Use the ▲ and ▼ buttons to choose your rename and press **OK** to save. **Note: You can only use numbers 0-9 and letters A-Z.**

OVERWRITE: The **Overwrite** function will save new photos over the old photos on your SD card if it becomes full. Each time a new photo is taken the oldest photo on the card will be overwritten. Press the ▼ button to highlight the **Rename** option in blue. Press **OK**. Use the ▲ and ▼ buttons to choose your rename and press **OK** to save. If you want to change this, Press the ▲ button to highlight the **YES** and the ▼ button to highlight **NO**. Press **OK** to save your preferred setting.

FORMAT: Formatting your SD card clears everything off the card. (It will delete any pictures that are stored on the card!) We recommend formatting your SD card every time before using your camera. Even if you have a new SD card, you should always format the card before you use it in the camera. To format the SD card, press **OK** and then scroll ▼ (down) until **YES** is highlighted in blue. Press the **OK** button. You will see a screen that has “Please Wait” pop up. When the camera goes back to the previous screen, your SD card has been formatted.

DEFAULT: The **Default** option resets all the settings to the original factory default settings. Press the **OK** button. Use the ▼ button to highlight the **YES** option. Press **OK**. When your camera goes back to the previous screen, it was defaulted to the manufacturer’s settings.

SOFTWARE VERSION: This is for manufacturer/engineering purposes only.

Viewing photos on the color display:

You can view your photos on the color display when in the field. Press the **OK** button to play a slideshow of the pictures stored on your SD camera. Use the **▲** and **▼** buttons to toggle through the photos. If you see photos you want to delete, show the image on the screen, and press the **MENU** button. This will delete the photo that is showing on the screen, unless you scroll to **Delete All**. Pressing **OK** on the **Delete All** option will delete all your photos.

AUXILIARY POWER: Your camera comes with an Auxiliary power jack. If you want to hook up an external 6V battery to power the camera, you can, as well as a solar panel. The jack necessary to make the connection is a standard 4mm jack. When using our auxiliary cable, you can use a 6-12V external battery.

MINI USB: Your camera can use a mini USB cable to hook up to your computer or TV to look at the photos. Plug the small jack of the cable into the bottom of the camera. Plug the USB end into the

USB port on your home computer or USB capable television. The USB will recognize the new hardware and download the proper driver to view the images or videos. The screen on the camera will say Mass Storage. If the image files do not automatically open, you will need to open it using Windows Explorer to locate the camera. It will appear as a **removable disk** or **SDHC**, etc.

Tricks and Tips/Troubleshooting

- For best results, mount the camera approximately 4 feet off the ground facing straight forward as level as possible.
- To enhance the flash, we recommend positioning the camera in an area with a backdrop to reflect the maximum amount of light. For instance, place the camera 20-30' from a field edge facing the woods. For the inside of timber, positioning the camera facing a thicket approximately 20-30' away.
- Try to set the camera up so it is not facing directly into the sun either in the morning or

the evening when game movement is at its peak.

- Use the Covert Tree60 mounting system to mount the camera up higher pointing down on them for a better look. Works great when you do not have a straight tree to attach to.
www.covertscoutingcameras.com

ISSUE: Camera will not turn on.

POSSIBLE PROBLEM:

- No SD card in the card slot
- Corrupt SD card
- Batteries are too low to power up camera

POSSIBLE SOLUTION:

- Insert SD card in card slot
- Try a different SD card
- Install fresh batteries

If you are still having problems with your camera contact customer service at 877-462-1799 or e-mail us at support@dlccovert.com

Quick Tip: When turning camera from setup mode to the on position, the screen goes black. It is supposed to do this.

Quick Tip: Format the SD Card and then Default the camera. This resets the camera back to the manufacturer's settings.

IMPORTANT NOTE: Contact Covert Support for troubleshooting prior to contacting the retail store from which you purchased the product. We will be happy to take care of you!

Covert Scouting Cameras Warranty:

Covert Scouting Cameras warranties this product for a period of 2 (two) years from the date of purchase. This warranty only covers manufacturer's defects and does not cover damage caused by misuse or abuse of the product. This warranty includes two-year repair or replacement service on product from date of purchase. If you have problems with this product, please do not contact the store you purchased it from. Contact Covert Scouting Cameras Customer service toll free at 877-

462-1799 or e-mail us at support@dlccovert.com. You can also visit our website at covertscoutingcameras.com, click on support and fill out the support form. We will get back to you usually within 24 hours. Proof of purchase will be required for replacement.

Covert Warranty Policy and Procedure:

To receive repair or replacement by Covert Scouting Cameras two-year warranty, we ask you to do the following:

-All returns must have a Return Authorization (RA#) prior to sending in the camera.

1. E-mail or call our customer service department.
-support@dlccovert.com
-toll free: 877-462-1799
Please explain to the technician what issues you are having with your camera.
2. If you are asked to return your camera to Covert Scouting Cameras, you will be responsible for the cost of shipping to Covert Scouting Cameras. In return, Covert will

provide fast and exceptional service as well as incur the cost of shipping back to you. (Only within the Continental United States.)

3. Please include the following information when sending in your camera.

-RA# on outside of package

-Return address

-Telephone and Email address

-Brief description of the problem

-Copy of proof of purchase

4. Please make sure all the accessories are removed (i.e. SD Cards, batteries, solar panels SIM cards, straps, ETC.) before shipping. All accessories received by Covert Scouting Cameras will NOT be returned.
5. This warranty only covers manufactures' defects and does not cover damaged caused by misuse or abuse of the product.

Covert International Warranty Policy and Procedure:

1. Outside the US, service is the available through the distributor/reseller of purchase.
2. All returns must have an RA# provided by Covert. Copy of Proof of Purchase is required for all returns.
3. Covert is not responsible for lost or damaged products incurred during the shipping process.
4. Insurance for returns is at the discretion of the customer. Additional charges apply for return shipping.

In the maintenance of the product, Covert Scouting Cameras may use new or equivalent, to new parts, assemblies, or products for equal or improved quality. All defective parts, assemblies, and products became the property of Covert. Return and claims will be handled according to the current Covert Scouting Cameras, Inc. procedure.

These warranties shall not apply to any defect, failure or damage caused by improper use or improper or inadequate maintenance and care. Covert shall not be obligated under these warranties:

- a. To repair damage resulting from attempts by personnel other than Covert representatives to install, repair or service the product unless directed by a Covert representative.
- b. To repair damage, malfunction or degradation of performance resulting from improper use or connection to incompatible equipment or memory.
- c. To repair damage, malfunction, or degradation of performance caused using non-Covert supplies or consumables or the use of Covert supplies not specified for use with this product.
- d. To repair an item that has been modified or integrated with other products when the effect of such modification or integration

increases the time or difficulty of servicing the product or degrades performance or reliability.

- e. To perform user maintenance or cleaning or to repair damage, malfunction.
- f. To repair damage, malfunction or degradation of performance resulting from use of the product in an environment not meeting the operating specifications set forth in the user manual.
- g. To repair damage, malfunction or degradation of performance resulting from failure to properly prepare and transport the product as prescribed in published product materials
- h. Failure to register the product warranty within 10 days of purchase.
- i. To replace items that have been refilled, are used up, abused, misused, or tampered with in any way.
- j. To install replacement items that are not considered customer replaceable.
- k. To support software not supplied by Covert

- I. To provide software or firmware updates or upgrades.

Any service identified in the above list and provided by Covert at the Customer's request shall be invoiced to the customer, at Covert's then current rates for parts, labor, and shipping.

THE ABOVE WARRANTIES ARE GIVEN BY COVERT WITH RESPECT TO THIS PRODUCT AND ITS RELATED ITEMS IN LIEU OF ANY OTHER WARRANTIES, EXPRESS OR IMPLIED. COVERT AND ITS VENDORS DISCLAIM ANY IMPLIED WARRANTIES OF MERCHANTABILITY OR FITNESS FOR A PARTICULAR PURPOSE OR ANY SIMILAR STANDARD IMPOSED BY APPLICABLE LEGISLATION. COVERTS RESPONSIBILITY TO REPAIR, REPLACE, FOR DEFECTIVE PRODUCTS AND RELATED ITEMS IS SOLE AND EXCLUSIVE REMEDY PROVIDED TO THE CUSTOMER FOR BREACH OF THESE WARRANTIES.

Some states, provinces, and countries do not allow the exclusion or limitation of incidental or consequential damages or exclusions or limitation

on the duration of implied warranties or conditions, so the above limitations or exclusions may not apply to you. This warranty gives you specific legal rights, and you may also have other rights that vary by state, province, or country.

TO THE EXTENT ALLOWED BY LOCAL LAW, EXCEPT FOR THE OBLIGATIONS SPECIFICALLY SET FORTH IN THIS WARRANTY STATEMENT, IN NO EVENT SHALL COVERT AND ITS VENDORS BE LIABLE FOR ANY INDIRECT, SPECIAL, INCIDENTAL OR CONSEQUENTIAL DAMAGES (INCLUDING LOSS OF PROFITS) WHETHER BASED ON CONTRACT, TORT, OR ANY OTHER LEGAL THEORY AND IRRESPECTIVE OF WHETHER COVERT OR THE VENDOR HAS ADVANCE NOTICE OF THE POSSIBILITY OF SUCH DAMAGES.