



Canadian Code Black
Covert Scouting Camera Instruction Manual



Watch the set up video on our website at:
www.covertscoutingcameras.com

Table of Contents

Camera button control diagram:.....	4
Installing the batteries:	5
Purchasing your SIM card:	6
Installing your SIM card:	7
Installing the SD card:.....	9
Setting up the wireless network:	10
Formatting the SD card:	12
NET Setup without a Computer	13
NET Setup/Download Tool:.....	14
Understanding main screen info:.....	24
Customizing the camera settings:	25
Setting the camera mode:	26
Camera mode settings:	26
Video mode settings: (Fig 20)	27
PIR tab:.....	30
NET tab:.....	34
Controlling your camera using SMS:	35
SYS tab:	39
Viewing photos on the color display:	44
Troubleshooting:.....	46
Tricks and tips on field setup:.....	49
Covert Scouting Cameras Warranty.....	51
Covert warranty policy and procedure.....	51
Setting up your Code Black on a MAC.....	59

What You Will Need To Setup the Camera:

- Minimum of 4 AA Batteries
- (1) 4GB SD Card (Up to 32GB)
- (1) SIM Card with a texting plan from Bell, Rogers or Telus

Quick Setup:

1. Install batteries and SD card.
2. Turn camera onto setup.
3. Under the SYS tab, set the time and date.
4. Turn the camera on. (The screen will go black for “power saver” mode.)

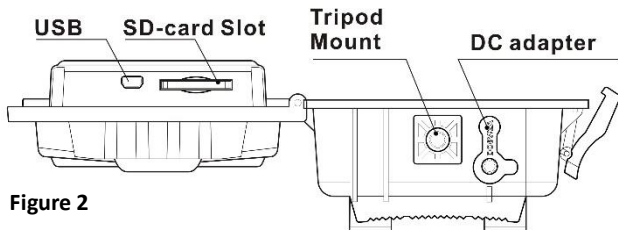
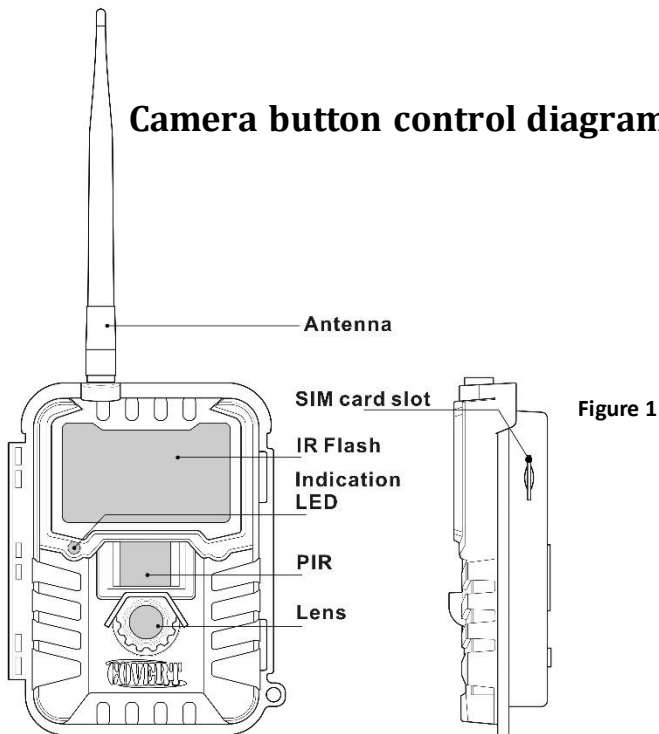
Congratulations on your purchase of the Canadian Code Black Covert Scouting Camera! We truly value your business and will continue to provide you top quality customer service should you ever need help with any of our products.

Check out our other products on our website at:
www.covertscoutingcameras.com

Covert Scouting Cameras
4338 Greenridge Spa Road
Lewisburg, KY 42256

We know the first big question you are going to have once you purchase your Code Black is, “How do I get it set up to work over the cellular network?” This is very easy if you follow the steps laid out for you in this manual starting on the following pages. We hope you enjoy hassle free performance from this quality product for years to come.

Camera button control diagram:



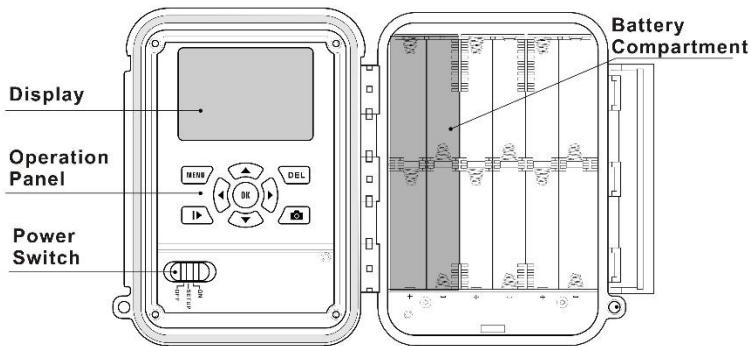


Figure 3

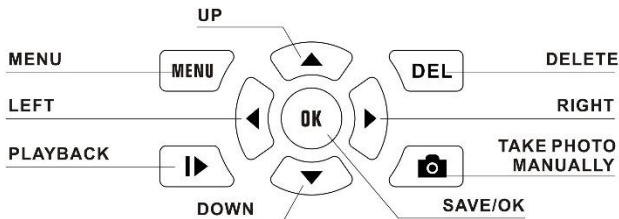


Figure 4

Installing the batteries:

Your Code Black can function short term on 4AA batteries. Improved battery life on 8-AA, but we suggest you use 12AA batteries to get the most out of your cameras battery life. Using Covert rechargeable AA batteries can extend the battery life significantly.

Install the batteries by sliding the top battery in to the sleeve first, then depressing the spring with the other battery and snapping down in place. Pay attention to the (+) or (-) molded into each sleeve to determine if you insert the positive or negative end into the sleeve first. Negative battery terminal always contacts the spring.



Figure 5

Purchasing your SIM card:

The Code Black is designed to send the photos it takes over the cellular network to any phone or email address instantly once the photo is taken. You will have to purchase a texting package from Bell, Rogers or Telus to set up your wireless feature. For example, the plan we recommend with Rogers Talk and Text 20 Plan.

This camera will function as a regular trail camera if the SIM card is not active. All high-res photos will store to the SD card.

●●●○○ Rogers-EXT 3G 5:49 AM
rogers.com

3MVP SUPPORT MYROGERS

WHAT PLAN SUITS ME?	TALK & TEXT PLANS	TALK, TEXT, & INTERNET PLANS
Monthly Service Fee	Messaging	Unlimited Talk Time
Talk and Text 15 \$15.75	UNLIMITED Canadian text, picture, and video messaging	—
Talk and Text 20 \$20.75	UNLIMITED Canadian, US and International text messaging & UNLIMITED Canadian picture and video messaging	UNLIMITED local weekend calls (Fri 6 pm to Mon 7 am)
Talk and Text 30 \$30.75	UNLIMITED Canadian, US and International text messaging & UNLIMITED Canadian picture and video messaging	UNLIMITED local evening (6 pm – 7 am) & weekend calls (Fri 6 pm – Mon 7 am)
Talk and Text 40 \$40.75	UNLIMITED Canadian, US and International text messaging & UNLIMITED Canadian picture and video messaging	UNLIMITED local incoming calls & UNLIMITED local evening (6 pm – 7 am) and weekend calls (Fri 6 pm – Mon 7 am)
Talk and Text 55 \$55.75	UNLIMITED Canadian, US and International text messaging & UNLIMITED Canadian picture and video messaging	UNLIMITED local anytime calls
Talk and Text 70 \$70.75	UNLIMITED Canadian, US and International text messaging & UNLIMITED Canadian picture and video messaging	UNLIMITED Canadian-Wide anytime calls

GET MORE WITH A BILLED MONTHLY PLAN

Get more flexibility, value and benefits with a monthly

Figure 6

Installing your SIM card:

Now that you have your SIM card, open your camera housing to expose the control panel. Make sure your camera mode selector switch is in the OFF position. On the left side of the camera control panel towards the top is a small card slot.

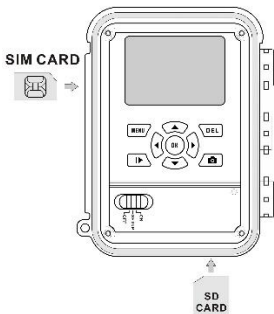


Figure 7

Press the card in until it bottoms out and then release. It will snap in place. To remove the SIM card, simply press in on the card until it clicks and then release it.

Installing the SD card:

Now that you have your SIM card and it has been installed in the camera you will need to install a Covert SD card in the bottom of the camera. Push in until it clicks and release. To remove, repeat that process, the card will pop out enough to remove. You can use any SD card size up to 32GB. **You must have the SD card in the camera to be able to turn the camera on and set it up.**

NOTE: Every photo taken with this camera will be saved to the SD card even if it is sending the photos wirelessly. You will always have access to the high resolution photos on the SD card just like with standard game cameras.

Setting up the wireless network:

- 1) Slide selector switch to the right to the **SETUP** position. Press the **MENU** button. You will see the screen shown below (Fig 8):

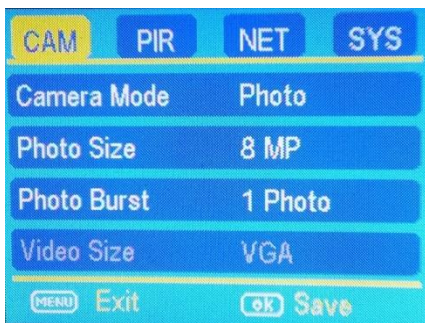


Figure 8

- 2) Press the ► button 2 times to highlight the NET tab in yellow. Press the ▼ button to highlight the **Send Mode** option. Press the ► button to toggle the option in the white box to **INSTANT**. Press OK to save this setting. You will then be asked a max number. 0-99. To receive an

unlimited amount of pictures, enter 0 (zero).

This is the number of pictures the camera can send you in a 24-hour period. Press the menu button. This will take you back to the home screen.

You will need to be patient as the camera does its initial set-up and looks for cellular service. While finding the network you will see the word **searching**, Then **Search Network** in red on the screen. Once you see your provider name, you are ready to move on.

Formatting the SD card:

Press the menu button, then ► button 3 times to highlight the SYS tab.

- 3) Navigate down by pressing the ▼ button repeatedly until the **FORMAT** option is highlighted and press **OK**. You will see the screen shots shown below. Press the ◀ button to highlight **YES** and press **OK**. Your SD card is now formatted.

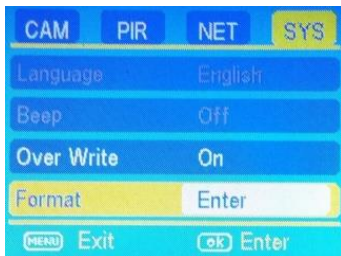


Figure 9

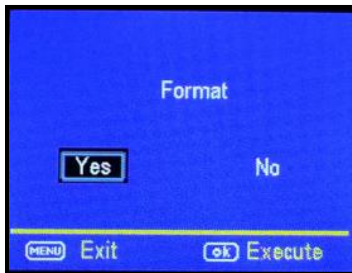


Figure 10

NET Setup without a Computer

- 1) Press the Menu button
- 2) Press the ► button repeatedly until the **NET** tab is highlighted in yellow.
- 3) Press the ▼ arrow (4) times to highlight the **SMS Switch** and press ► button (1) time to turn the **SMS Switch ON**. Press **OK** to save this setting.
- 4) Press the ▲ or ▼ buttons to add the primary phone number in the Press **OK** to save.

NET Setup/Download Tool:

- 4) Next Press the ◀ or ► button repeatedly until the **NET** tab is highlighted in yellow.
- 5) Press the ▼ arrow to highlight the **DOWNLOAD TOOL** and press **OK**.

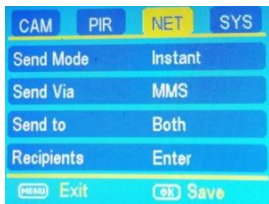


Figure 11



Figure 12

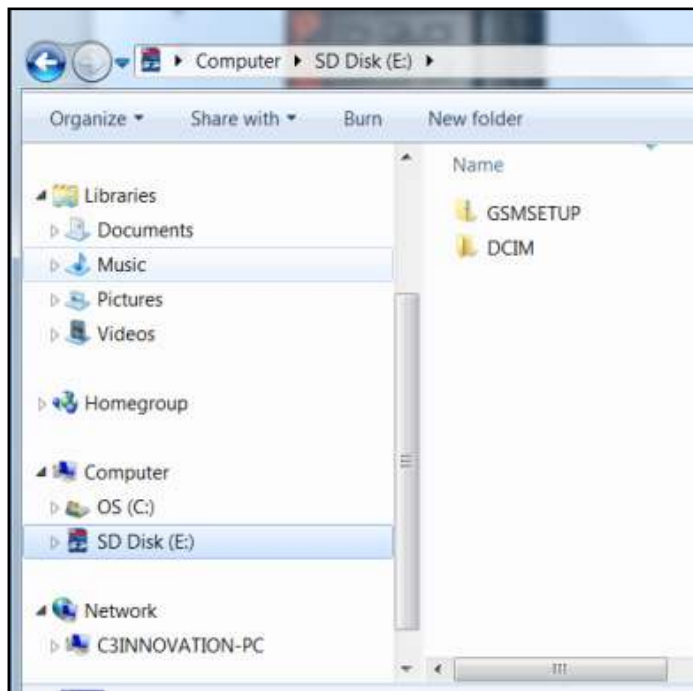


Figure 13

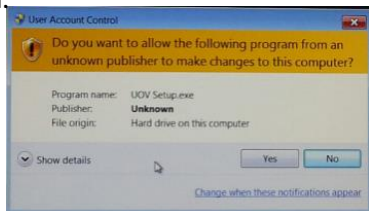
- 6) Turn the camera off by sliding the selector switch to the **OFF** position

- 7) Remove the SD card from your camera and insert into your personal PC card reader.
- 8) Locate the SD card in Windows Explorer and double click on it to show its contents. (Fig 11)

Double click on the **GSMSETUP** and then double click on the UOV Setup application.

- 9) You will see a warning box like Fig. 14 below. Choose **YES** and the UOV set-up program will launch.

Figure 14



- 10) You will see the following screen for setting up the **NET** options for your camera. This is where you add phone numbers and e-mail addresses and control the number of wireless photos sent from the camera each day.

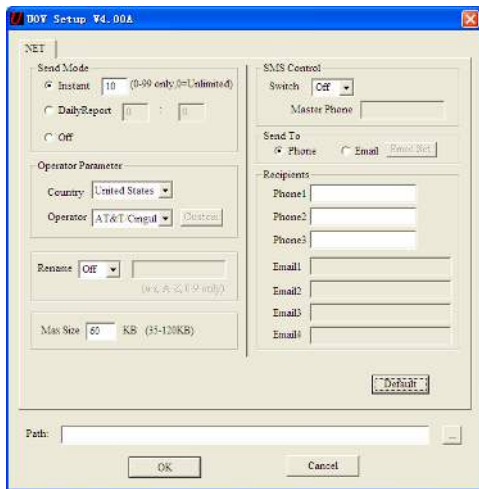


Figure 15

*Make sure to save your path by clicking the 3-dot button to the right of the screen. Selecting your SD card tells the camera where to save the pictures. (This is usually “Removable Disk F” or “Removable Disk H”).

*Enter a 1 before the phone number.

11) Send Mode:

- a. **INSTANT:** If you want the camera to send you photos the instant it's taken, you want to choose this option.
- b. **Max Number:** You can control the numbers of photos that are sent to your device or e-mail every day. If you want to limit this, put the maximum number of photos you want the camera to send each day in the box. If you want it to send every photo regardless of the number of photos each day, set this value to **0 (zero)**. This sends a picture every time the device is triggered.
- c. **Daily Report:** This option only sends you the last photo taken each day with a report of all the other activity during the day.
- d. **OFF:** choose this option if you do not want the camera to send out the photos taken. This will make the camera perform like a traditional trail camera.

12) **Operator Parameter:**

- e. **Country:** Choose your Country or Origin in the drop down menu.

- f. **Operator:** Choose your provider in the drop down menu.

13) **SMS Switch:** Choose the **ON** option if you want to be able to control the basic functions of your camera by texting it codes from your phone. If you do not want to have wireless control, you can leave the option at **OFF**. This only works when sending to a phone. You cannot control this via e-mail.

14) **Send to:**

- g. **Phone:** Choose this option if you only want the photos sent to phone numbers via MMS.
- h. **Email:** Choose this option if you only want the photos sent to chosen e-mail addresses via cellular.

15) **Recipients:**

- i. **Phone:** Enter up to 4 different phone numbers in the field of Master Phone, Phone1, Phone2 and Phone3 respectively. You will need to start every number with a 1 followed by the area code.

- j. **Email:** Enter up to 4 different e-mail addresses in the field of Email1, Email2, Email3 and Email4 . **The Email option will only be available if you have chosen the Email options.**

16) **Rename:** If you want to change the name given to the camera to something that you can use to identify the camera, set the drop down box to **ON**. Enter the new camera name in the box.

17) **Max Size:** This should be set to 80KB or lower.

18) **Default:** If you want to set the camera settings back to the original defaults before changes were made, pick this button. You cannot go back once this button is pressed so make sure you want to re-set all the settings before you pick this button.

18) **Path:** The path is the location in which the settings are saved. **You will want to set your path to save in the removable disk.** To do this you will pick the button with the 3 dots on it to the right of the path text bar. This will allow you to choose the SD card from your windows explorer. You must save this information to the SD card for the set up

to take place once you put the SD card back into the camera.

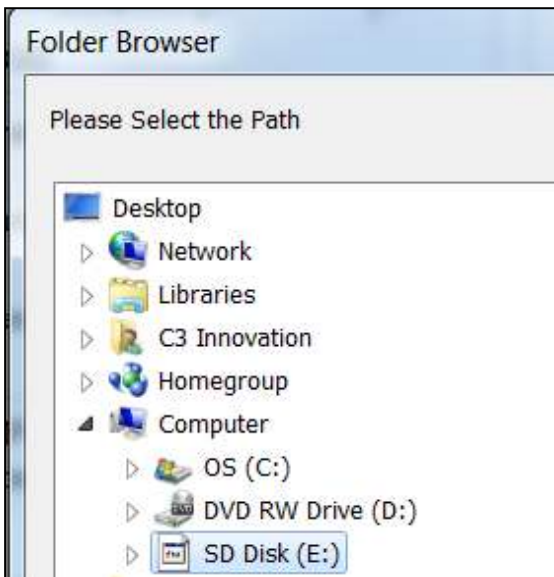


Figure 16

19) Press the **OK** button to accept the settings and save them to the SD card. You will see the following box pop up. Pick **OK** you can then cancel the UOV Setup.

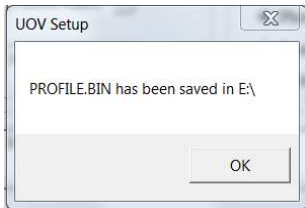


Figure 17

20) Remove the SD card from your computer and replace it in the camera.

21) Slide the **SELECTOR** switch to the **SETUP** position. Wait for the camera to go through its set up process and find cellular service. Normally 15-20 seconds to see **update success**

22) Press the **MENU** button.

23) Press the button that has the **CAMERA** symbol on it (1) time to manually take a photo with the camera. You will know that a photo has been taken because the photo counter on the screen will say **001**.

Send a test photo:

24) Press the **PLAY** button to enter the Play mode and then press the **MENU** button. You will see the following screen.



Figure 18

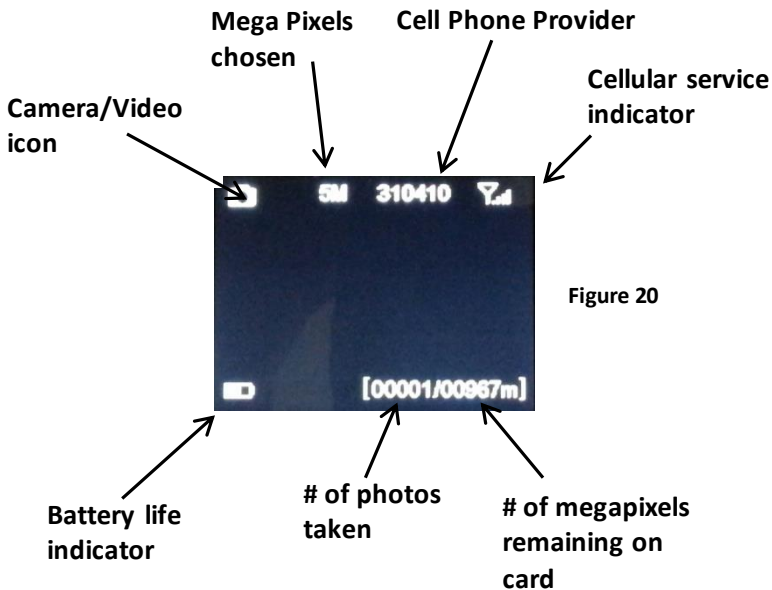
25) Press the ▼ to highlight the **SEND** option and press **OK**.



Figure 19

26) The LCD screen will start to count up from step 1 to 10. Once you see **Send Successful**, you have successfully sent your first photo and your camera is ready to take photos.

Understanding main screen info:



Customizing the camera settings:

Your camera is set to function with the default settings without any further customization.

However, you will likely want to at very least set the clock and date. The following information will help you customize your camera settings so you can get the most out of the trail camera experience.

To start, Press the **MENU** button once to open the customization menus. We will start with the **CAM** system tab. You will see **CAM**, **PIR**, **NET**, and **SYS** tabs across the top of the screen. **CAM** should be highlighted in yellow. (Fig 21)

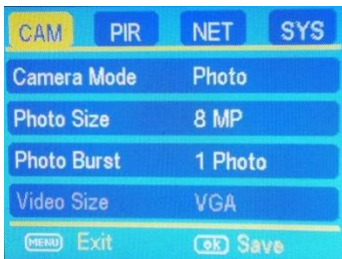


Figure 21

Setting the camera mode:

Press the ▼ button to highlight the Camera Mode option in yellow. Either **Photo** or **Video** will show up in a white box to the right. Press the ► button to toggle between **Photo** or **Video** until the option you want shows in the white box. Press **OK**.

NOTE: If you do not press **OK**, your setting will return back to the previous setting.

Camera mode settings:

PHOTO SIZE: Press the ▼ or ▲ button to highlight Photo Size in yellow.

Press the ► arrow repeatedly to toggle between 3mp, 5mp, 8mp, or 12mp. Press **OK** once the desired option shows in the white box. **Keep in mind the higher the MP, the larger the file and the faster your SD card can fill up.**

PHOTO BURST: Your camera can take a 1, 2 or 3 shot burst every time the PIR is triggered to take a photo. The camera will only send the first photo of the photo burst to your phone or e-mail.

Press the ▲ or ▼ buttons to highlight the **PHOTO BURST** option: To set this function, press the ► repeatedly to show the 1 Photo, 2 Photo, or 3 Photo option. Press **OK** to save the desired setting.

Video mode settings: (Fig 22)

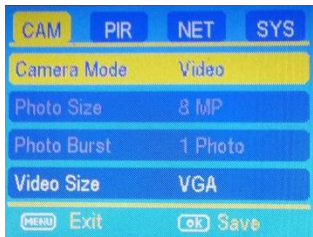


Figure 22

VIDEO SIZE: You can choose from VGA or QVGA video options.

NOTE: The camera will NOT send videos to your phone or e-mail. It will only alert you that a video has been taken.

Press the ► button to toggle between the VGA and QVGA options. Press **OK** to save the setting.

VIDEO LENGTH: You can adjust the length of time the camera takes a video from 5-60 seconds. Press the ▲ or ▼ button to highlight the **VIDEO LENGTH** option. Press the ► or ◀ buttons repeatedly to change the number of seconds shown in the white box. **Long videos fill the SD card up quickly.**

NOTE: You need to double the time interval from what your video is set on. Example: 20 second video length, your trigger interval needs to be at **LEAST 40 seconds.**

PIR tab:

Press the ▲ or ▼ buttons repeatedly until only the top tab menu is highlighted in yellow. Press the ► or ◀ button to highlight the **PIR** tab in yellow. Screen should appear like Figure 23.

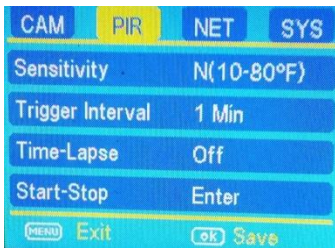


Figure 23

SENSITIVITY: There may be situations where you might feel the camera is not catching animals that are nearby or maybe the camera is triggering too easily. You can adjust the sensitivity of your camera to help with this. Under most conditions, the **NORMAL** option will work the best. Normal option is for weather between 10°F-80°F. In high temperatures, temperatures that are higher than

80°F, the **HIGH** setting might help differentiate between the outside temps and the body temps of the animal. In cold conditions, temperatures that are lower than 10°F, you may find that the **LOW** option is best as the camera can easily differentiate the outside temps from the body temps of the subject. If you are using the time lapse function, you would choose **OFF** to turn off the PIR.

Press the ▼ button to highlight the **Sensitivity** option. Press the ► button repeatedly to toggle between the options in the white box. Once the desired option is chosen, press the **OK** button to save the setting.

TRIGGER INTERVAL: Allows you to customize how often the camera can be allowed to take a photo. Press the ▲ or ▼ arrow to highlight the **Trigger Interval option**. Repeatedly press the ◀ or ▶ to adjust the timing. Options are 5-60 seconds (5 second increments) and 1-60 minutes. Once you have chosen your desired trigger interval, press the **OK** button to save the setting.

NOTE: You need to have a 30 second trigger interval. Your trigger interval needs to double for every phone number and/or email address that you enter in your NET setup. Example: If you enter three phone numbers/email address then you need to have a three minute trigger interval.

TIP: You can press and hold the ◀ or ▶ button to speed through the settings rather than repeatedly pressing the button.

TIME LAPSE: Press the ▼ and ▲ arrows to highlight the **Time-Lapse** option. This option allows your camera to automatically take a photo without being triggered by the PIR. If you already set the **Sensitivity** to **OFF**, then the camera will only take photos when the **Time-Lapse** option is on. If you have the PIR set to **LOW**, **NORMAL**, or **HIGH**, the camera will also take photos when the PIR is triggered. To turn the **Time-Lapse** option on, use the ◀ or ▶ buttons to choose a time option. 5-60 seconds (in 5 second increments) and 2-60 minutes.

Once you have chosen the time option you want, press **OK** to save the setting. The camera will continuously take photos in timed increments you set. Remember, this will generate a lot of photos and you may want to limit the number of photos sent via MMS daily.

START-STOP: If you only want your camera to be on during part of the day each day you can set the Start-Stop function. The Code Black has a dual start-stop option. Press the ▲ and ▼ buttons to highlight the Start-Stop option. The default setting is **OFF**. Press the ► button to toggle the setting to **ON** and press **OK**. See Fig 24 & 25 below.

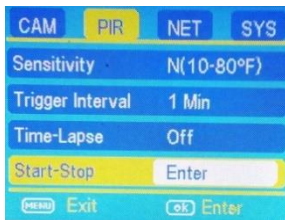


Figure 24

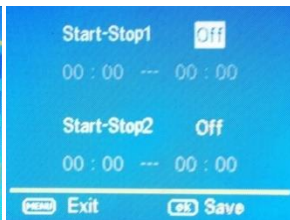


Figure 25

Use the ▲ and ▼ buttons to set the time in hours (military time) and press the ► button to change to minutes and use the ▲ and ▼ to set the minutes.

Press the ► button to navigate to the Stop settings and repeat the process from above to set the Stop time. You can press the ◀ and ► buttons to navigate back through the settings if necessary.

Once you have the start-stop times set, press **OK** to save the settings.

NET tab:

Press the ▲ and ▼ buttons until just the **PIR** tab is highlighted and then use the ► to highlight the **NET** option.

Most of the settings under the NET tab are controlled in the original camera set up. You will not be able to make changes to these settings from the camera. You would have to repeat the steps for setting up the wireless network to make changes to these settings.

Note: In order to make changes to your setup, you will have to insert your card back into your computer.

SMS SWITCH: The only option that is controlled under the **NET** tab is the **SMS Switch**. This switch controls whether you can send SMS texts to your camera to change the basic settings. If this switch is set to **ON**, you will be able to communicate with your camera via text message through your phone. If the setting is set to **OFF**, this function is disabled.

Press the ▼ button repeatedly until you highlight the **SMS Switch** option. Use the ► button to toggle between **ON** and **OFF**. Press the **OK** button to save the settings.

Controlling your camera using SMS:

You can control many of the basic functions of your camera from your cell phone by sending it codes via text message. You can control the following functions on your camera via SMS.

- Set Camera/Video Mode
- Acquire pictures
- Add/delete e-mail addresses or phone numbers of recipients
- Show the camera's altitude and longitude

IMPORTANT NOTE: the SMS switch **MUST** be set to **ON** in the **NET** set-up for the SMS function to work.

*SOME TOWERS DO NOT SUPPORT ALL

COMMANDS. The person who is in position 1 in the **NET** set up in the phone number list or in the SMS

switch is the first phone number can delete/add the subordinates of phone numbers 2, 3 and 4.

You must have a phone number entered in the setup in order to send commands to the phone. If you only have an e-mail in the setup menu, you cannot use the SMS option.

Both the “commander phone number” and the subordinates have the rights to edit the SMS command orders to control the camera.

(See Table 1).

Table 1

ITEM	SMS Command Order
Add phone number	#140#1#phone number#
Delete phone number	#140#0#phone number#
Add email address	#141#1#email address#
Delete email address	#141#0#email address#
*Set Picture mode	#310#p#
*Set Video mode	#310#v#
*Acquire Picture	#500#
*Location	#510#
*Set Wireless on	#200#on#
*Set Wireless off	#200#off#
*Set Instant mode	#100#i#0#(0-99)
*Set Daily Report	#100#dr#hh#mm#
*Set Send to phone	#102#phone#
*Set Send to email	#102#email#
*Set PIR on	#320#on#
*Set PIR off	#320#off#
*Set Flash range	#331#6m/12m#

*All phone numbers can command.

You can text the camera phone number that you were given with the SIM card using the codes listed above for the specific function changes.

ACQUIRE PICTURE: If you send #500# to acquire picture, the camera will capture a single picture immediately and send it to the email addresses and/or phone numbers listed in the NET settings.

LOCATION: Text #510# and the camera will send you back its longitude and latitude coordinates of the location of the camera. Keep your **SMS switch** set to **ON**. If the **SMS switch** is set to **OFF**, this function will not work. The camera must be in the ON position for the command to work. **SOME TOWERS DO NOT SUPPORT ALL COMMANDS.** If the #510# sends you a response of “Network Busy” this means the tower/service area does not support the command. This is not a manufacturer/camera issue.

Wireless ON/Wireless OFF: If you want the camera to stop sending you photos, you can send the code

from Table 1 to shut it **OFF** and back **ON**. If set to **OFF**, you will not receive photos or Daily reports to your phone or e-mail, and the camera will reject any command code except for #200#on#. Your camera will always still record all the events on the SD card.

SYS tab:

The SYS tab controls all the internal system information such as Setting the clock, Time stamp, Flash range, Password, Over Write, and Format. (Fig 26)



Figure 26

SETTING THE CLOCK: Scroll over to the SYS tab using the ◀ and ▶ buttons and then press the ▼ button to highlight the **Set Clock** option. Press **OK**. You will see the following screen. (Fig 27)

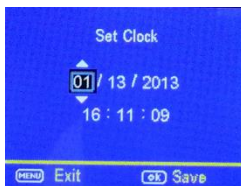


Figure 27

Press the ▲ and ▼ button to set the MONTH, the press the ► button to navigate to the DATE and use the ▼ and ▲ buttons to set the date. Press the ► button to navigate to the year and set that using the ▲ and ▼ buttons.

Navigate down to the time using the ► button and follow the same process as above to set the time. Once you have the time set, press **OK** to save the settings.

TIME STAMP: Press the ▼ button to highlight the **Time Stamp** option. The default setting for the **Time Stamp** option is **ON**. This puts the Time, Date, Temp and moon phase at the bottom of the camera. If you do not want the Time Stamp **ON**, use the ► button to toggle to the **OFF** position. Press **OK** to save the settings.

FLASH RANGE: You can set the Flash Range depending on your set up. If most of the subjects are going to be inside 20', use the 6m/20ft setting. If you need extended night vision, choose the

12m/40' option. Press the ▼ button to highlight the **Flash Range** option. Use the ► button to navigate between the two different settings. Press OK to save the settings.

PASSWORD: Press the ▼ button to highlight the **Password** option. You can password protect your camera with this setting. The default setting is **OFF**. **Make sure you write down your password or store it in your phone so you don't lose it.** If you set this option to **ON**, you will not be able to access your camera without the password. This is a very important security feature. To turn the password on, press the ► button to toggle to **ON** and press **OK**. You will see the following screen: (Fig 28).

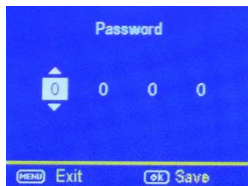


Figure 28

Use the ▲ and ▼ and ► buttons to set the password. Press OK to save the settings.

*If you forget your password, please contact Covert Scouting Cameras at support@dlccovert.com or call 877-462-1799 for RA #. We require warranty registration to verify your camera. This must be completed within 10 days after your purchase. Proof of purchase will be required.

OVER WRITE: The **Over Write** function will save new photos over the old photos on your SD card if it becomes full. Each time a new photo is taken the oldest photo on the card will be overwritten.

The default for this option is **OFF**. If you want to change this, Press the ▼ button to highlight the **Over Write** option and then press the ► button to toggle the setting to **ON**. Press **OK** to save the setting.

FORMAT: If you get into the field and forgot to clear your SD card before you went out, you can clear the contents of the card using the **Format** option.

If you have a new SD card, you should always format the card before you use it in the camera. To format the SD card, press the ▼ button until the **Format** option is highlighted. Press the OK button. You will see a screen that has Yes and No on it, use the ► button to navigate to **YES** and press **OK**.

DEFAULT SET: The **Default Set** option is the last option in the **SYS** tab. If you want to start clean and re-set all the settings to the original factory default settings you will choose this option. Press the ▼ button to highlight the **Default Set** option. Press **OK**. Make sure 100% that you want to re-set all the settings to factory default as you will have to start over with the process in re-doing all the settings.

Viewing photos on the color display:

You can view your photos on the color display when in the field. If you want to do this, make sure the **Selector switch** is set to **SETUP**. Press the **Play** button. You can use the ◀ and ▶ buttons to toggle through the photos. If you see photos you want to delete, show the image on the screen and press the **DEL** button. This will delete the photo that is showing on the screen. You will see the screen below. Use the ▶ button to navigate to **YES** and press **OK**. If you do not want to delete, press the **DEL** button again and to go back. (Fig. 29)

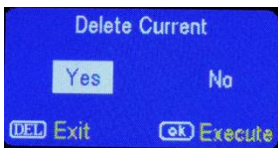


Figure 29

IMPORTANT NOTE: Remember you need a 1 before each phone number and you cannot use any spaces, dashes or hyphens.

AUXILIARY POWER: Your camera comes with an Auxiliary power jack. If you want to hook up an external 6V battery to power the camera, you can. The jack necessary to make the connection is a standard 4mm jack.

MINI USB: Your camera can use a mini USB cable to hook up to your computer or TV to look at the photos. Plug the small jack of the cable into the bottom of the camera. Plug the USB end into the USB port on your home computer or USB capable television. The USB will recognize the new hardware and download the proper driver to view the images or videos. The screen on the camera will say Mass Storage.

Covert offers an auxiliary cable to extend your battery life with an external 6 or 12 volt battery. In order to use 12 volt, you must use the Covert auxiliary battery cable.

Troubleshooting:

COMMON ERROR MESSAGES:

“LOG IN FAIL”

“SEND FAIL”

“NETWORK BUSY”

Reasons for error:

Login Fail:

1. The service in your area is insufficient to run the camera.
2. There is an error when setting up the SIM card with your provider. Be sure to check that the card is not “locked.”

Send Fail:

1. The parameters are set incorrectly in the NET Setup. Parameter error means it was not saved to the correct path.

2. The camera does not have sufficient service to send the picture.

Network Busy:

1. The 3G network service provider is actually busy.

2. The camera does not have sufficient service to send the picture.

3. Network busy is almost always a service provider issue, for example there isn't enough money on the SIM card or you have the incorrect plan.

- 1) Re-do the UOV setup to make sure there are not any mistakes. Check to make sure the numbers and email addresses are entered without any spaces or dashes. You need a 1 before every phone number.
- 2) If it's a cellular service issue you may need to purchase a booster antenna from Covert Scouting Cameras to help boost the signal. These can be very effective in boosting the signal to your camera in a poor signal area.

- 3) If you are still having problems, contact customer service at **877-462-1799** or e-mail them at support@dlccovert.com If you e-mail or have to leave a message, we will get back to you as quickly as we can.

Cannot access the SET-UP menu:

Reasons for issue:

- 1) This only happens if you don't have a SD card in the card slot or if the SD card is corrupt.
- 2) Batteries are too low

Suggestions to remedy

- 1) Install a SD card or Install a new SD card
- 2) Replace the batteries.

Tricks and tips on field setup:

- For best results, mount the camera approximately 4 feet off the ground facing straight forward as level as possible.
- To enhance the flash, we recommend positioning the camera in an area with a backdrop to reflect the maximum amount of light. For instance, place the camera 20-30' from a field edge facing the woods. For the inside of timber, positioning the camera facing a thicket approximately 20-30' away.

- Try to set the camera up so it's not facing directly into the sun either in the morning or the evening when game movement is at its peak.
- Use the Covert Tree60 mounting system to mount the camera up higher pointing down on them for a better look. Works great when you don't have a straight tree to attach to.
www.covertscoutingcameras.com

Covert Scouting Cameras Warranty:

Covert Scouting Cameras warranties this product for a period of 2 years from the date of purchase. This warranty only covers manufacturer's defects and does not cover damage caused by misuse or abuse of the product. This warranty includes one year repair or replacement service on product from date of purchase. If you have problems with this product, please do not contact the store you purchased it from. Contact Covert Scouting Cameras Customer service toll free at 877-462-1799 or e-mail us at support@dlccovert.com. Proof of purchase will be required for replacement.

Covert Warranty Policy and Procedure:

To receive repair or replacement by Covert Scouting Cameras two year warranty, we ask you to do the following:

-All returns must have a Return Authorization (RA#) prior to sending in the camera.

1. E-mail or call our customer service department.
 - support@dlccovert.com
 - toll free: 877-462-1799Please explain to the technician what issues you are having with your camera.
2. If you are asked to return your camera to Covert Scouting Cameras, you will be responsible for the cost of shipping to Covert Scouting Cameras. In return, Covert will provide fast and exceptional service as well as incur the cost of shipping back to you. (Only within the Continental United States.)
3. Please include the following information when sending in your camera.
 - RA# on outside of package
 - Return address
 - Telephone and Email address
 - Brief description of the problem
 - Copy of proof of purchase

4. Please make sure all the accessories are removed (i.e. SD Cards, batteries, solar panels SIM cards, straps, ETC.) before shipping. All accessories received by Covert Scouting Cameras will NOT be returned.
5. This warranty only covers manufactures' defects and does not cover damaged caused by misuse or abuse of the product.

Covert International Warranty Policy and Procedure:

1. Outside the US, service is the available through the distributor/reseller of purchase.
2. All returns must have an RA# provided by Covert. Copy of Proof of Purchase is required for all returns.
3. Covert is not responsible for lost or damaged products incurred during the shipping process.

4. Insurance for returns is at the discretion of the customer. Additional charges apply for return shipping.

In the maintenance of the product, Covert Scouting Cameras may use new or equivalent, to new parts, assemblies or products for equal or improved quality. All defective parts, assemblies, and products became the property of Covert. Return and claims will be handled according to the current Covert Scouting Cameras, Inc. procedure.

These warranties shall not apply to any defect, failure or damage caused by improper use or improper or inadequate maintenance and care. Covert shall not be obligated under these warranties:

- a. To repair damage resulting from attempts by personnel other than Covert representatives to install, repair or service the product unless directed by a Covert representative.

- b. To repair damage, malfunction or degradation of performance resulting from improper use or connection to incompatible equipment or memory.
- c. To repair damage, malfunction, or degradation of performance caused by the use of non-Covert supplies or consumables or the use of Covert supplies not specified for use with this product.
- d. To repair an item that has been modified or integrated with other products when the effect of such modification or integration increases the time or difficulty of servicing the product or degrades performance or reliability.
- e. To perform user maintenance or cleaning or to repair damage, malfunction.
- f. To repair damage, malfunction or degradation of performance resulting from use of the product in an environment not meeting the operating specifications set forth in the user manual.

- g. To repair damage, malfunction or degradation of performance resulting from failure to properly prepare and transport the product as prescribed in published product materials
- h. Failure to register the product warranty within 10 days of purchase.
- i. To replace items that have been refilled, are used up, abused, misused, or tampered with in any way.
- j. To install replacement items that are not considered customer replaceable.
- k. To support software not supplied by Covert
- l. To provide software or firmware updates or upgrades.

Any service identified in the above list and provided by Covert at the Customer's request shall be invoiced to the customer, at Covert's then current rates for parts, labor and shipping.

THE ABOVE WARRANTIES ARE GIVEN BY COVERT
WITH RESPECT TO THIS PRODUCT AND ITS RELATED

ITEMS IN LIEU OF ANY OTHER WARRANTIES, EXPRESS OR IMPLIED. COVERT AND ITS VENDORS DISCLAIM ANY IMPLIED WARRANTIES OF MERCHANTABILITY OR FITNESS FOR A PARTICULAR PURPOSE OR ANY SIMILAR STANDARD IMPOSED BY APPLICABLE LEGISLATION. COVERTS RESPONSIBILITY TO REPAIR, REPLACE, FOR DEFECTIVE PRODUCTS AND RELATED ITEMS IS SOLE AND EXCLUSIVE REMEDY PROVIDED TO THE CUSTOMER FOR BREACH OF THESE WARRANTIES.

Some states, provinces, and countries do not allow the exclusion or limitation of incidental or consequential damages or exclusions or limitation on the duration of implied warranties or conditions, so the above limitations or exclusions may not apply to you. This warranty gives you specific legal rights, and you may also have other rights that vary by state, province, or country.

TO THE EXTENT ALLOWED BY LOCAL LAW, EXCEPT FOR THE OBLIGATIONS SPECIFICALLY SET FORTH IN THIS WARRANTY STATEMENT, IN NO EVENT SHALL

COVERT AND ITS VENDORS BE LIABLE FOR ANY INDIRECT, SPECIAL, INCIDENTAL OR CONSEQUENTIAL DAMAGES (INCLUDING LOSS OF PROFITS) WHETHER BASED ON CONTRACT, TORT, OR ANY OTHER LEGAL THEORY AND IRRESPECTIVE OF WHETHER COVERT OR THE VENDOR HAS ADVANCE NOTICE OF THE POSSIBILITY OF SUCH DAMAGES.

Code Black Set Up on a MAC:

1. With the activated SIM card and SD card in the camera, turn the camera to setup. Press menu then scroll over to the "SYS" tab and go down until you see format, click on it and choose "yes" to format. Now scroll up and over to the "NET" tab. Scroll down until you see "Download Tool" and click on it. Now turn the camera off, eject the SD card and put into your Mac.
2. Go to <http://www.codeweavers.com>
There, you can download a 14-day "trial" of "Crossover".
3. Once you have installed "Crossover"—and the program is launched—a dialogue box will appear that gives them several "dropdown" menu options ("Supported Applications"; "Select an Installer"; "Select a bottle into which to install").

4. The user needs to click on "Select an Installer" to open that dropdown menu. Within that menu—you're given two options ("Choose Installer File" or "Choose Installer Folder")
5. You will want to select/click the "Choose Installer File" option.
6. A new dialogue box will then pop up, allowing you to locate the SD card within the Finder window, select/click to enter the SD card, and can then select the NET Setup file.
7. Once you click on that—the same dialogue box shown in your "instructions" diagrams in the manual will appear—and simply follow the steps as your manual outlines.
8. Once you've set all the settings, then "change the path" per your instructions back to the SD card, click OK—and it's done.
9. Remove the SD card and put into the camera—and go through the remaining owner's manual instructions to set up the cam,

take the "test photo" and send it to their phone and/or email. If you get a "network busy" message, this usually means two things. 1. When saving the setup, the path was not saved to your SD card. 2. Your SIM card was not setup with the correct plan from your 3G Provider.

Appendix One:

Technical Specifications

Picture Resolution

12MP, 8MP (Interpolated),

Real 5MP, 3MP

Lens F/NO=3.0 FOV (Field of View)=52°

IR-Flash 6m, 12m

Display Screen 2.0" LCD

Memory Card Up to 32GB

Video Resolution

VGA;

HD: 720P, WVGA

PIR Sensor Multi Zone

PIR Sensitivity Adjustable (High/Normal/Low)

Trigger Time 1.2s; (HD version: 1.0s)

Weight 0.35 kg(without battery)

Operation/Storage Tem. -20 - +60°C / -30 - +70°C

Trigger Interval 0s – 60 min.

Time lapse

5-55 second (in 5 second increments);
1-59 minutes (in 1 minute increments);
1-8 hours (in 1 hour increments);

Photo Burst 1–3

Video Length 1–60s

Power Supply 4×AA, 8×AA or 12AA

Stand-by Current < 0.25 mA (<6mAh/Day)

Power Consumption

600 videos (interval=5min, video
Length=10s) ;

>800 MMS (use 12*AA batteries)

Low Battery Alert LED Indicator; SMS alert

Sound Recording Available for HD cameras
ONLY

Mounting Rope/Belt/Python lock

Dimensions 140 x87 x55 mm

Operation Humidity 5% - 90%

Security authentication FCC, CE, RoHS