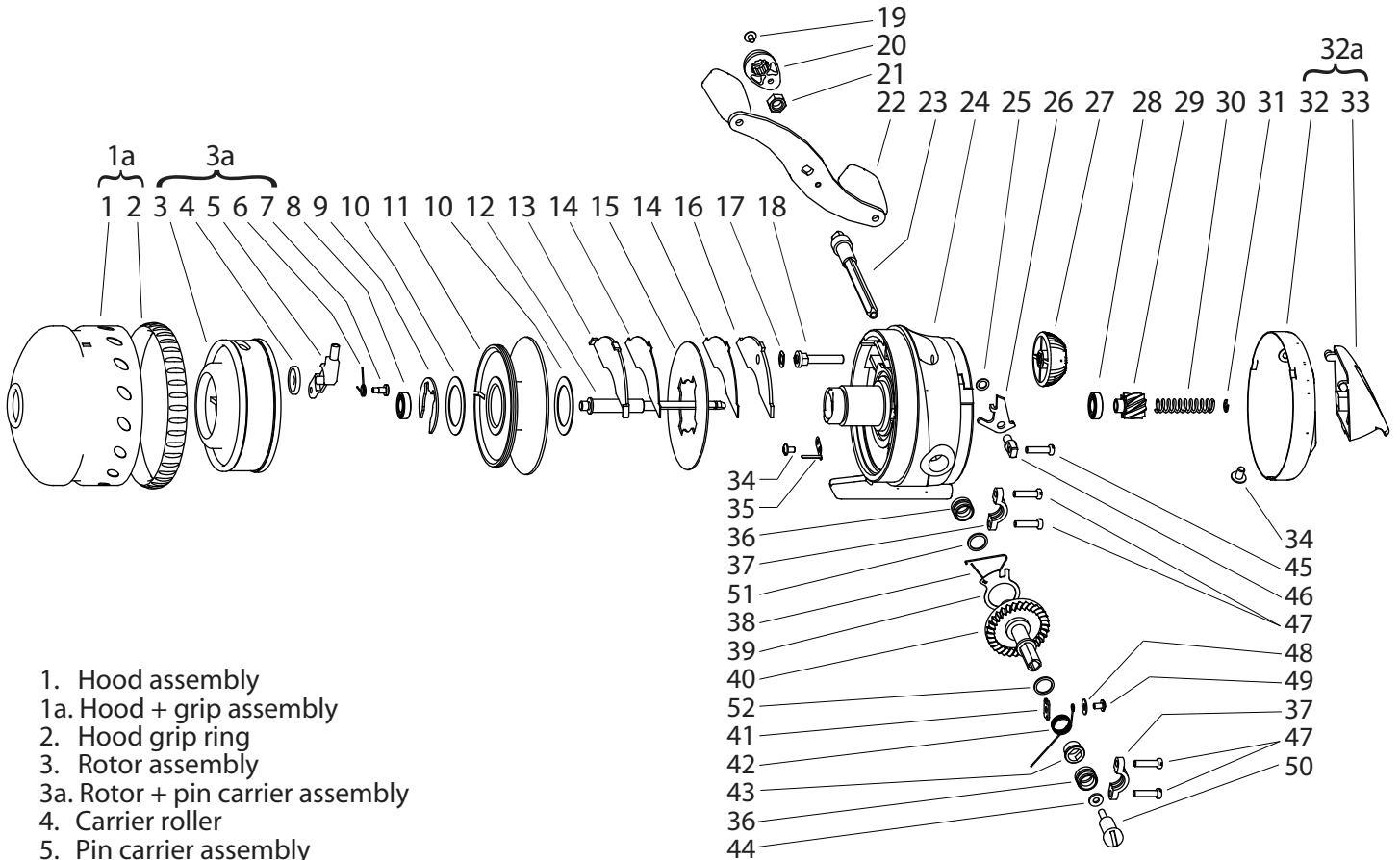




# XTREME DUTY 1067-XD BOWFISHING REEL



- |   |  |  |
|---|--|--|
| <ul style="list-style-type: none"> <li>1. Hood assembly</li> <li>1a. Hood + grip assembly</li> <li>2. Hood grip ring</li> <li>3. Rotor assembly</li> <li>3a. Rotor + pin carrier assembly</li> <li>4. Carrier roller</li> <li>5. Pin carrier assembly</li> <li>6. Carrier spring</li> <li>7. Carrier screw</li> <li>8. Ball bearing (6.5x13x3.5)</li> <li>9. Spool clip</li> <li>10. Spool washer (2)</li> <li>11. Spool assembly</li> <li>12. Main shaft</li> <li>13. Front caliper</li> <li>14. Friction pad (2)</li> <li>15. Drag disk</li> <li>16. Back caliper</li> <li>17. Drag spring</li> <li>18. Drag plunger</li> <li>19. Handle nut cover screw</li> <li>20. Handle nut cover</li> <li>21. Handle nut</li> <li>22. Handle Assembly</li> <li>23. Handle shaft assembly</li> </ul> | <ul style="list-style-type: none"> <li>24. Main body assembly</li> <li>25. Pawl shim</li> <li>26. A/R pawl</li> <li>27. Drag dial</li> <li>28. Ball bearing (7x14x3.5)</li> <li>29. Pinion gear</li> <li>30. Mainshaft spring</li> <li>31. Spring retainer</li> <li>32. Back cover</li> <li>32a. Back cover assembly</li> <li>33. Push button</li> <li>34. Retainer screw</li> <li>35. Clicker</li> <li>36. Main gear bushing (2)</li> <li>37. Bushing retainer (2)</li> </ul> | <ul style="list-style-type: none"> <li>38. A/R friction spring</li> <li>39. A/R retainer plate</li> <li>40. Main gear</li> <li>41. Coil anchor plate</li> <li>42. Cushion coil</li> <li>43. Coil bushing</li> <li>44. Handle screw washer</li> <li>45. A/R pawl post screw</li> <li>46. A/R pawl post</li> <li>47. Bushing retainer screw (4)</li> <li>48. Coil screw washer</li> <li>49. Coil screw</li> <li>50. Handle screw</li> <li>51. Main gear shim</li> <li>52. Coil bushing shim</li> </ul> |
|---|--|--|