



400 CAPSULE FEEDER CUSTOMER INSTRUCTIONS



- | | | | | |
|-----------------------|---------------------|-----------------------|-------------------|----------------------------|
| - 1 Capsule With Lid | - 4 3/8" Wing Bolts | - 4 Washers | - 4 Square Plates | - 2 Large Braces |
| - 2 Sets of Legs | - 1 Motor Assembly | - 1 Leg Accessory Box | - 4 Feet | - 40 Leg Bolts / Lock Nuts |
| - 1 Solar Panel Cover | - 2 1/4" Wing Bolts | - 2 Washers | - 2 Small Braces | |



x4
3/8" Wing Bolts



x4
Medium Washers



x2
1/4" Wing Bolts



x2
1/4" ID Washers



x40
Leg Bolts/
Lock Nuts



x4
Small Washers



x4
2-3/4" Bolts



x4
PVC Spacers
1-3/8" Long



x4
Lock Nuts

VIEW FROM INSIDE CAPSULE: EVERYTHING NEEDED

MOTOR ASSEMBLY

- **x1** Motor Plate Assembly
- **x1** 90 degree elbow
- **x1** Bolt Kit

LEG ACCESSORY BOX

INCLUDED IN BOX:

- **x4** Feet • **x2** Large Braces • **x2** Small Braces
- **x4** Square Plates for legs • **x1** Bolt Kit



REMOVE PARTS FROM FEEDER

LEGS

LEGS

x1 Battery

x1 Bolt kit for lid

x1 Timer



**x1 Solar
Panel Plate**

**x2 1/4" Wing Bolts
x2 1/4" ID Washers**

Remove above parts from feeder.

MOTOR ASSEMBLY

- x1 Pipe

- x4 2-3/4" Bolts

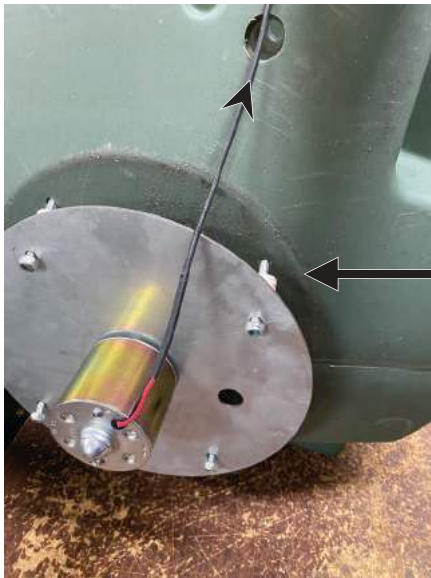
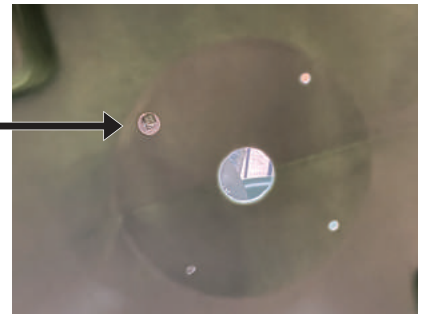
- x4 PVC Spacers

- x4 Small Washers



Place Feeder on Side

Place bolt and washer thru bolt hole inside of feeder. Start with bolt hole closest to 1-1/8" hole in feeder.



- Place spacer on bolt.
- Face motor wire as close as possible per bolt pattern to 1-1/8" hole on bottom of feeder and place on bolt.
- Put a nut on finger tight.
- Make sure flaps are on outside of spinner.
- Repeat bolt process 3 more times.
- Tighten nuts down in an "X" pattern.



- Push 90 deg. elbow thru the 1-1/8" hole and into timer pipe inside of feeder. Make sure pipe is facing wire on motor and is tight inside of timer pipe.
- Tap with hammer to make sure 90 deg. pipe is in all the way in.



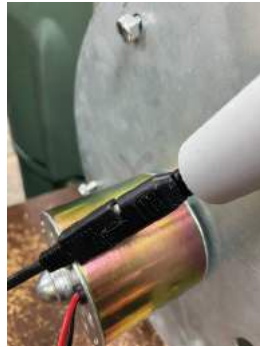
BATTERY BOX



① Feed timer plug thru PVC pipe



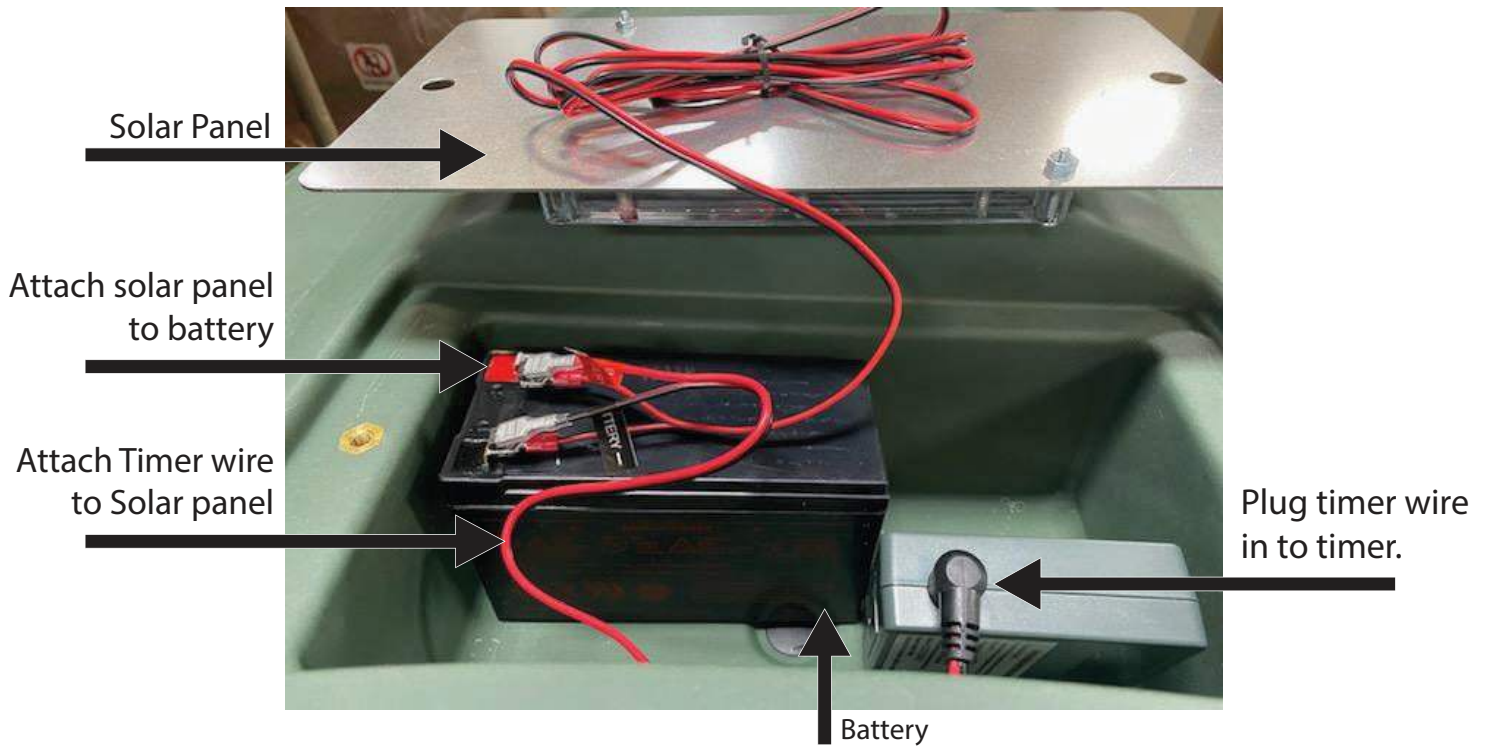
② Push plug all the way in.



③ Plug into motor wire.



④ Pull wire back into box



Set Timer



Put timer and battery back into box.
Attach to Solar panel plate you took off earlier with **x2** 1/4" wing bolts & **x2** washers.

FEET/LEG ASSEMBLY

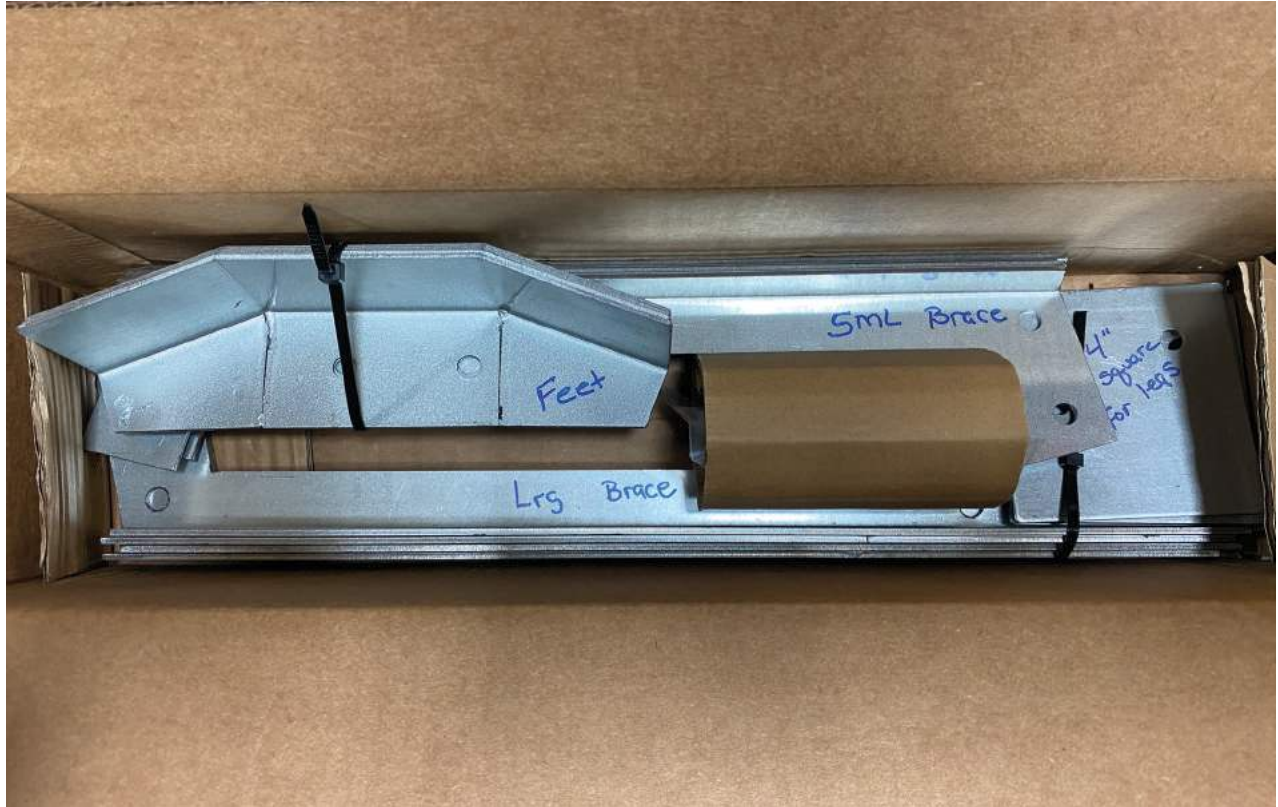
- 4 Small Barces

- 4 Feet

- 1 Bag of Hardware

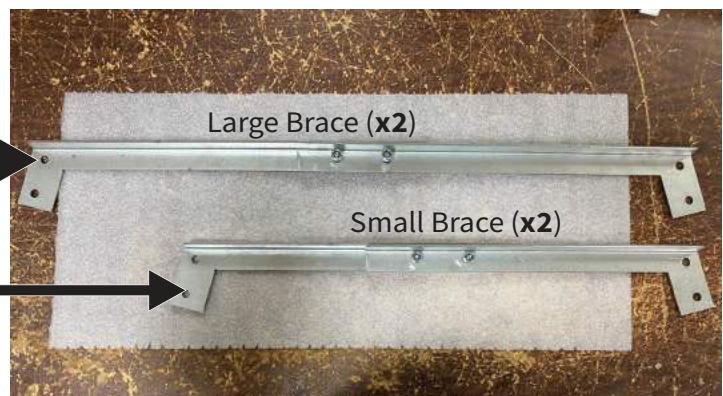
- 4 Large Braces

- 4 Square Leg Plates



Attach feet to outside of 90 degrees angle on legs & tighten down.

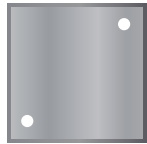
Assemble short braces together & Long braces together finger tight.



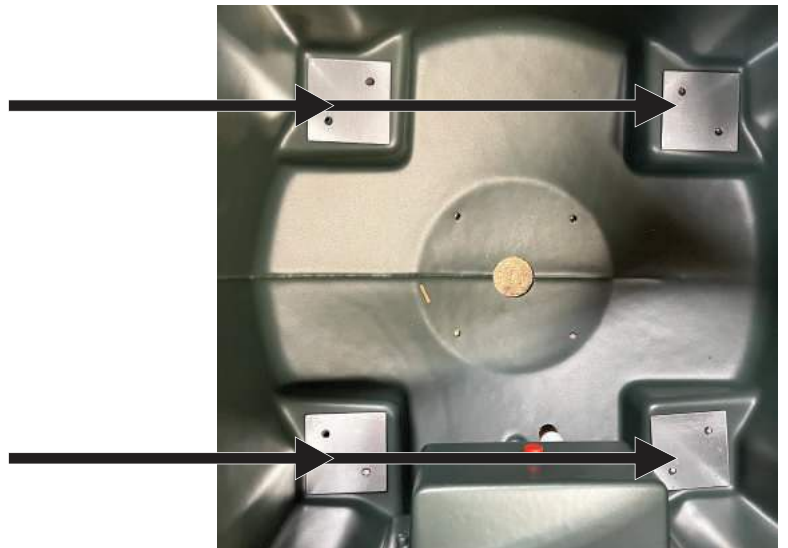


Attach braces to legs with wings pointing down, small braces on top across from each other and large braces on the bottom across from each other. Put nuts on fingertight.

Attach leg assembly to capsule by putting 4" squares leg plates on inside of feeder with 2 bolts and nuts fingertight.



- x4 : 4"x4" Square Plates



Repeat **3** more times - tighten all **8** bolts down to feeder first.

Stand Feeder up.

Adjust legs and tighten remaining **32** bolts down.



Place Capsule Feeder in desired location & fill with feed.
Attach lid by aligning holes on lid with nut inserts on feeder and secure lid
with the **x4** 3/8" wing bolts and **x4** medium washers.



*** FOR TROUBLE SHOOTING HELP OR TIPS ***

EMAIL US AT - customerservice@opioutdoors.com

CALL US AT - (888)-507-2021

ALL FEEDER AND ACCESSORIES CAN BE FOUND ON www.capsulefeeders.com